

NEXT STEP IN GLOBALISATION

OUR M.A.i-PRODUCTION PLANT MEXICO

Welcome!

We are specialists for innovative automation solutions.



7 locations worldwide



Headquarter & Production Plants:

M.A.i GmbH & Co. KG
Hummendorfer Straße 74
96317 Kronach, Bavaria / Germany

M.A.i - Automation Technology (Nanjing) Co. Ltd.
No. 1888 Jiyin Road
21106 Nanjing / P.R. China

M.A.i Mexico
Carretera Estatal 100 km 3.6 Int 1
Parque Industrial Terrakia Nave 9
76295 Colón, Querétaro / Mexico



Service & Sales:

M.A.i – Automation Technology (Ningbo) Co. Ltd.
Ningbo High Technology Zone
315040 Ningbo City / P.R. China

M.A.i – Automation Technology (Suzhou) Co. Ltd.
215000 Suzhou / P.R. China

M.A.i – innovative automation Servicecenter Hungary
Ráday utca 12
2112 Veresegyház, Budapest / Hungary

M.A.i – Automation SRB DOO Servicecenter Serbia
Trg Topolivaca 4
34000 Kragujevac / Serbia

M.A.i GmbH & Co. KG

Headquarter

Hummendorfer Straße 74

96317 Kronach, Bavaria / Germany

Sales | Engineering | Production | Service



→ 270 employees + 40 trainees

→ 8.000 sqm production area & 2.500 sqm administration area

M.A.i China



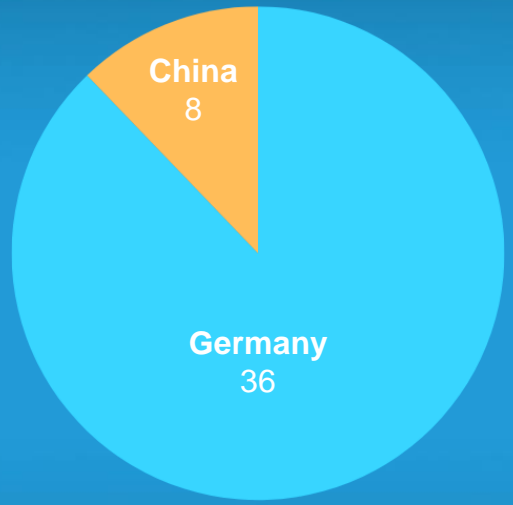
**M.A.i – Automation
Technology (Nanjing) Co. Ltd.**
No. 1888 Jiying Road
21106 Nanjing / P.R. China

Sales | Engineering | Production | Service

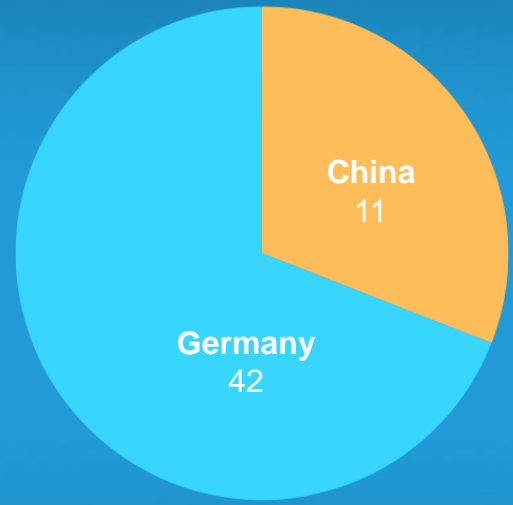


- 120 employees
- 3.000 sqm production area & 1.000 sqm administration area

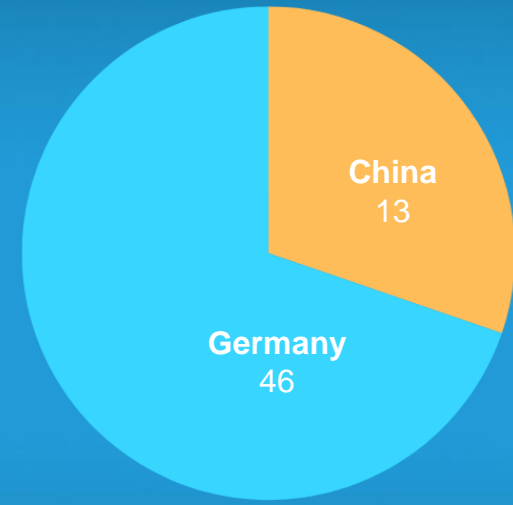
Current sales



2022
44 M. Euro



2023
53 M. Euro



2024
59 M. Euro
(expected)

And now ...

New destination since 2023

MEXICO  CALLING!

M.A.i Mexico

Carretera Estatal 100 km 3.6 Int 1
Parque Industrial Terrakia Nave 9
96295 Colón, Querétaro / Mexico

Sales | Engineering | Production | Service



- 40 employees in 2025
- 100 employees in 2030 (strategic plan)
- 3.000 sqm production area & 800 sqm administration area

Location



Terrakia
Industrial Parque
& M.A.i building



M.A.i building
backside, inside
production &
administration area

Your added value



shorter delivery times



no import duties



faster service



logistic corridor



infrastructure measures



direct contact person



no language barriers



significant investments

Significant investments all around the area



Sales & Employees

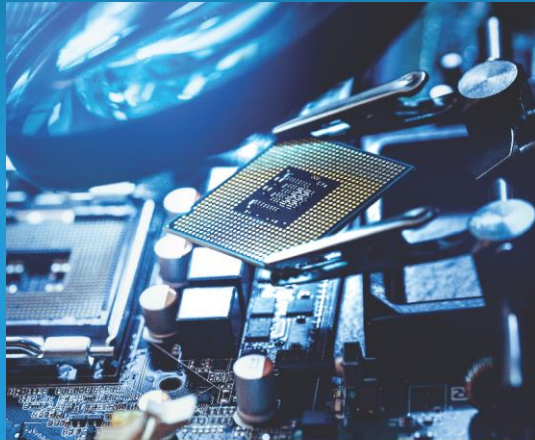
BUSINESS PLAN MAI MEXICO



Industry sectors



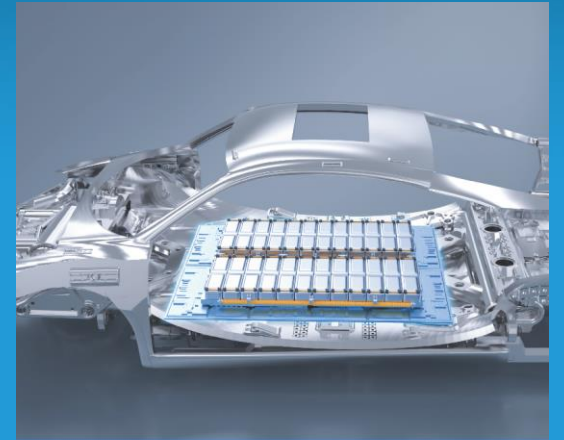
AUTOMOTIVE



ELECTRONICS



MEDICAL



NEW ENERGY

Customers



Automation solutions



**assembly
lines**

semi- and fully automatic
assembly and test lines

semi automated complex
manual workstations

camera based, electrical and
electronic testing techniques



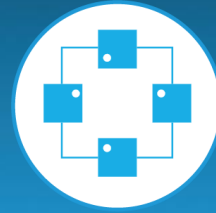
**testing
lines**



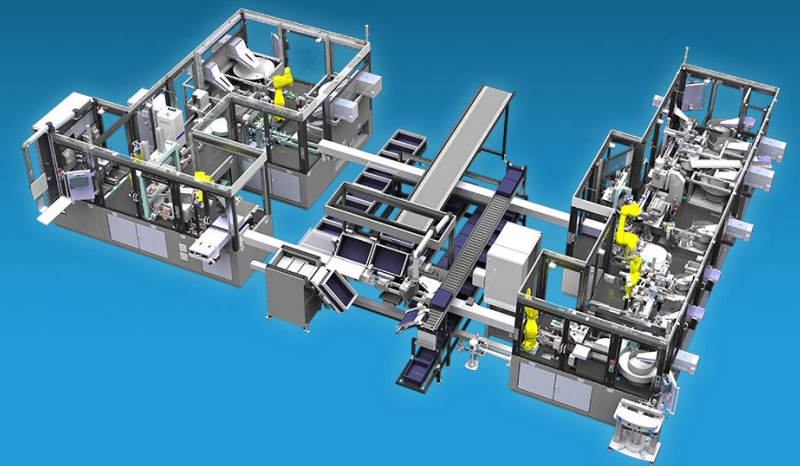
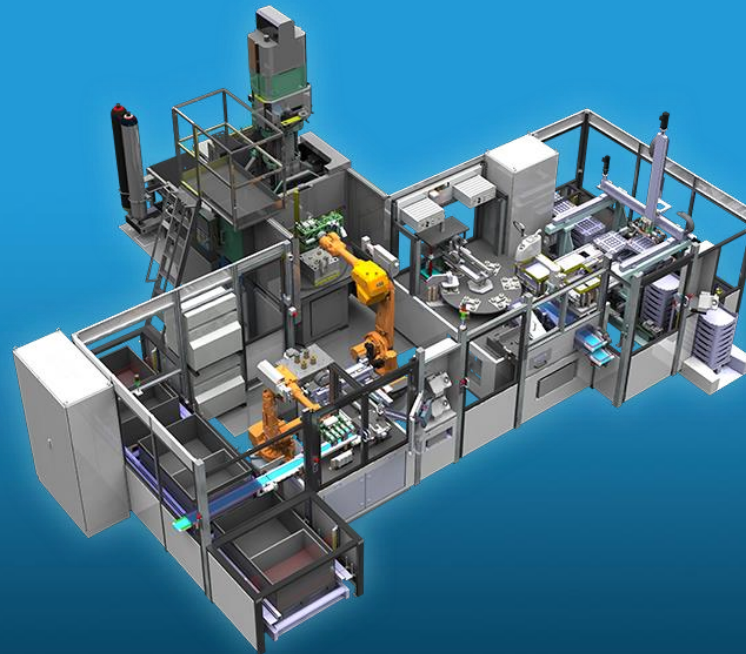
**injection
molding
automation**



**robot
automation**



**special
applicans**



handling- and robot automation systems
around injection molding/press technology

robot handling systems for loading and
unloading of manufacturing systems

systems for process data aquisition and
traceability

Automotive Example

Plastic Processing: Molding Automation of Interior lighting panel IML

Process notes:

Performance: 37 sec. / 4 parts

- servo-motorized 3-axis gantry handling for KLT, lid and tray
- 6-axis robot with multi-gripper (3D contour gripper)
- cleaning station with integrated suction and ionization
- cleanroom compatible 6-axis robot at SGM
- pneumatic transfer rotary module
- 6-axis robot for transferring injection molded parts
- keyence laser system for sprue separation
- inspection station – complex camera inspection system Cognex
- Clean room cabin as closed standardized M.A.i protective enclosure



Automotive Example

Assembly Processing: Automation of battery voltage disconnect

Process notes:

Performance: 8 sec. / 1 part

- product carrier circulation system with 22 part-specific 1-fold product carriers
- **Station 1:** manual workstation – preloading lower part
- **Station 2:** feeding and assembly piston
- **Station 3:** feeding and assembly of retainer + igniter by 4-fold rotary indexing table
- **Station 4:** O-ring assembly station for igniter
- **Station 5:** converting copper strip by 4-fold rotary indexing table
- **Station 6:** provide filter per 2x Scara robot
- **Station 7:** feeding and mounting damping element
- **Station 8:** repositioning lower part with O-ring assembly
- **Station 9:** test cell with screw system and component labeling with DMC code by laser unit
- **Station 10:** HV test, resistance measurement, tumble circuit test pin position
- **Station 11:** packing of the components in 2x tray variants



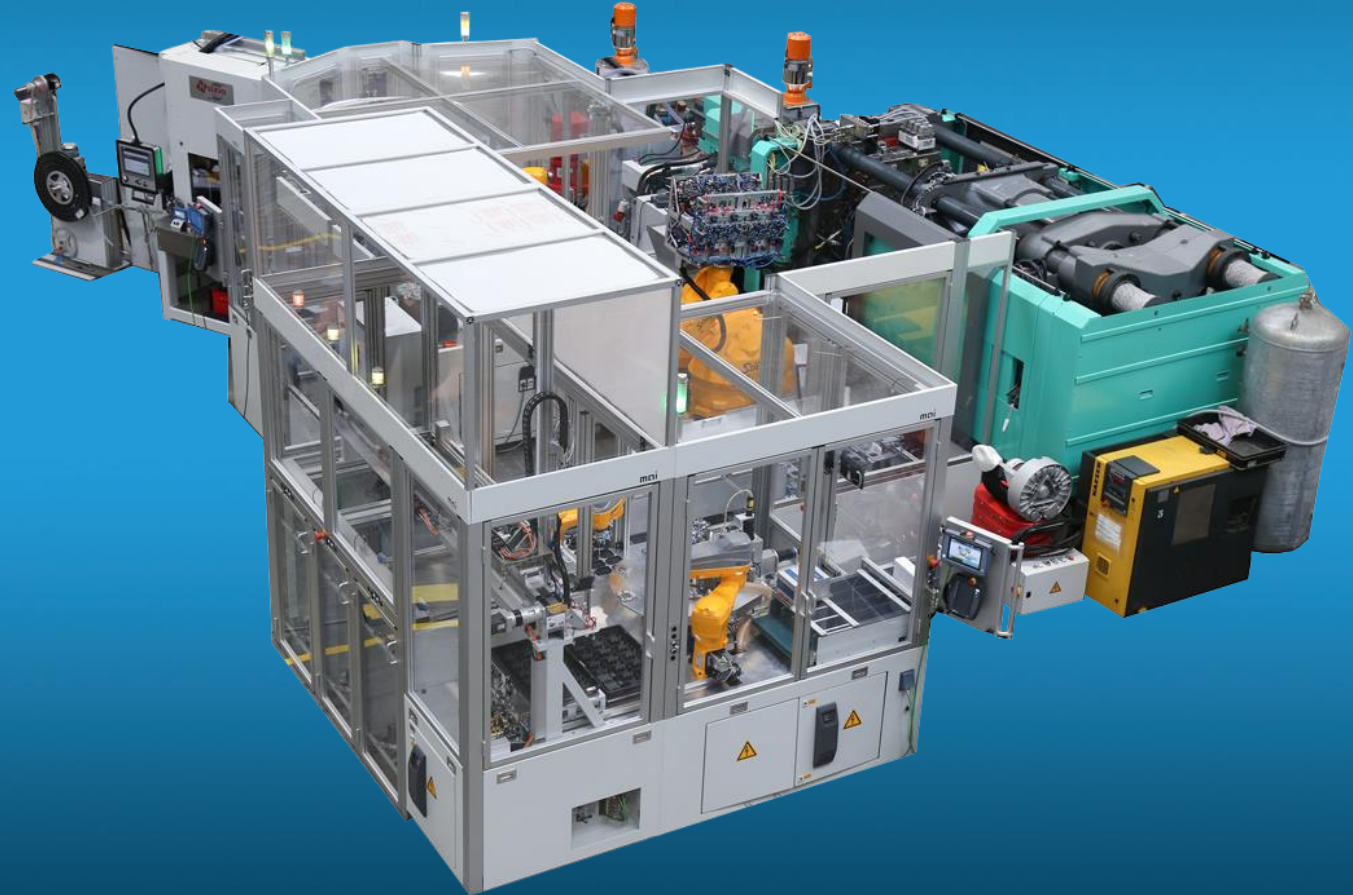
Automotive Example

Plastic Processing: Production of a radar sensors covers

Process notes:

Performance: 32 sec. / 8 parts / 120 metal parts / 8 cavities

- 6-axis robot Stäubli TX 200 with insertion and removal combi-gripper
- 3x Scara robot Stäubli TS 60 with removal combi-gripper
- bowl feeder with separating device
- cooling line with 10 4-fold mounting plates for 40 finished parts
- rotary table drive with 8 stations:
 - pin length check
 - wobble circle test
 - electrical function test (LV, HV)
 - part marking by means of centre punch
 - cleaning station
 - automatic packaging in trays or nok
- automatic dummy test with max. 10 different customer test dummies



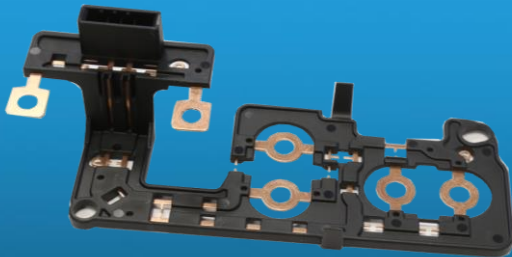
Electronics Example

Power Management: Assembly & testing line for E-Mobility – HV Contact bridge

Process notes:

Performance: 40 sec. / 4 parts

- process content: robot assembly line, 3 robots, EOLT
- DMC-marking and reading station
- press assembly bushes/screws with force-displacement monitoring
- camera inspection unit for holes
- EOL: M-slot test and high-voltage test
- pin-position measuring station



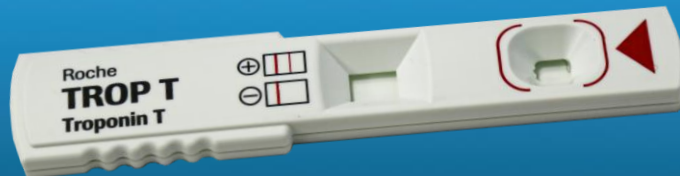
Medical Example

Clean Room Technology: Production cell for medical blood test stripes

Process notes:

Performance: 12 sec. / 16 parts

- clean room production class 7
- M.A.i-highspeed linear axis with 16-fold pneumatic suction gripper
- camera inspection unit with 4 cameras for check part geometry
- fast linear transfer system
- 2 tampon printing machines with camera monitoring
- 2 cameras for tampon-print check
- full automatic packaging line



Medical Example

Clean Room Technology: Assembly and testing cell for medical containers

Process notes:

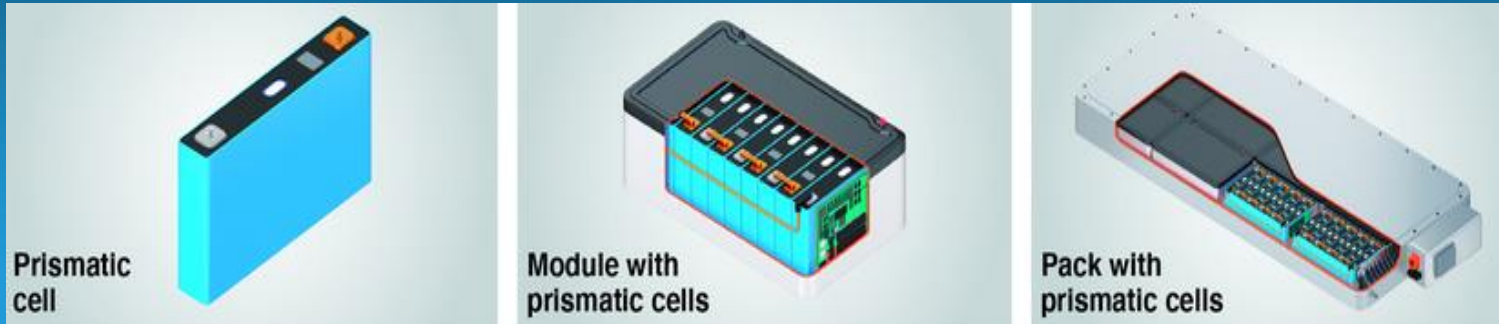
Performance: 7 sec. / 1 part

- clean room production class 6
- wall thickness measurement
- vacuum leak test
- color test
- mounting plug incl. ionization
- welding CO-EX foil by thermal contact welding
- leakage test after welding



New Energy Example

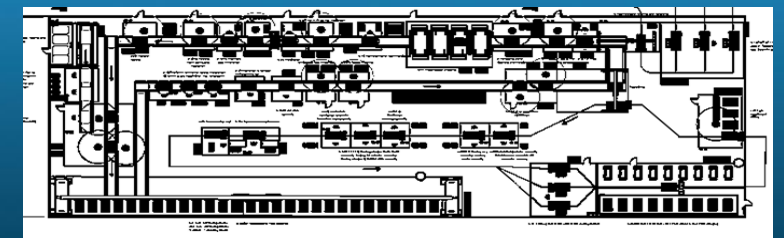
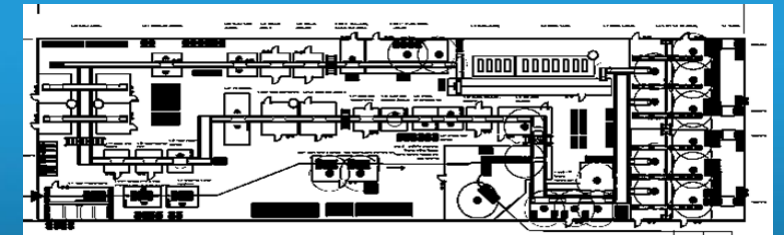
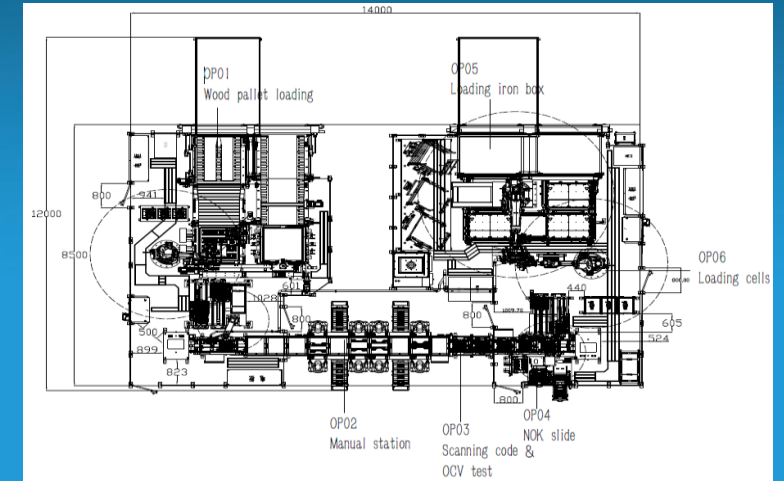
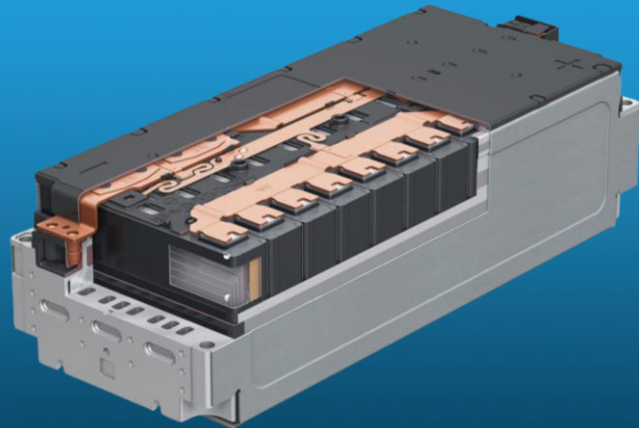
Power Management: Automation for car batteries (cells, modules & packs)



Step 1: Cells and Re-Pack of Cells

Step 2: Cells to Battery Modules

Step 3: Battery Modules to Battery Packs



GREAT IDEAS NEED GREAT SOLUTIONS

Please contact us for more informations about M.A.i Mexico!

